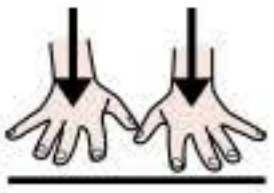


Cosmogonia



è



un'opera



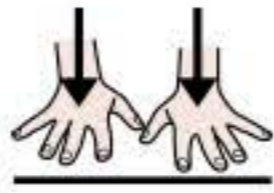
permanente,



che



c'è



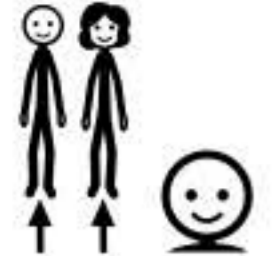
sempre,



che



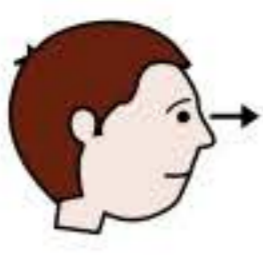
si



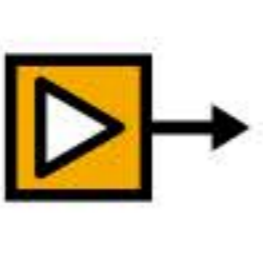
può



vedere



alle



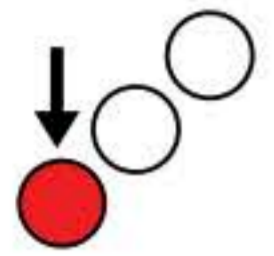
Industrie Fluviali.



In



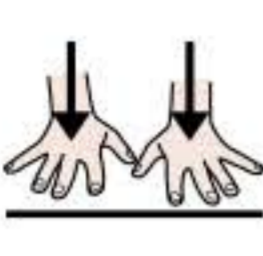
questa



opera



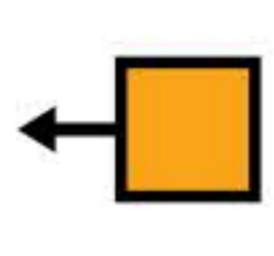
sono



raffigurati



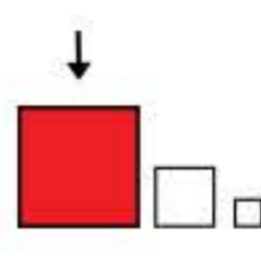
dei



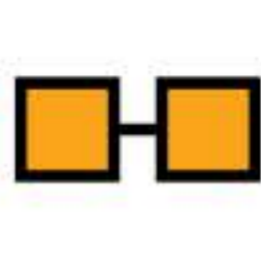
pesci



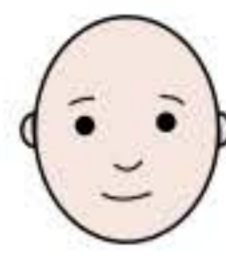
enormi



con



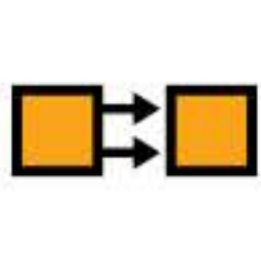
volti



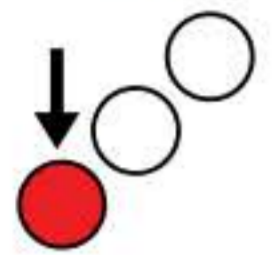
umani



Per



questa



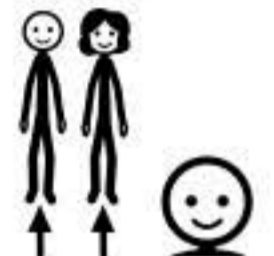
opera



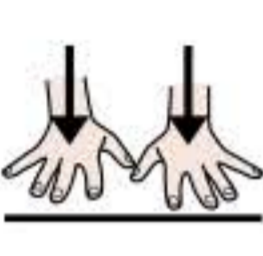
L'autore



si



è



ispirato



ad animali



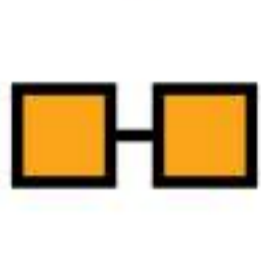
sacri



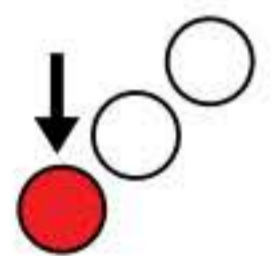
dell'antichità



Con



questa



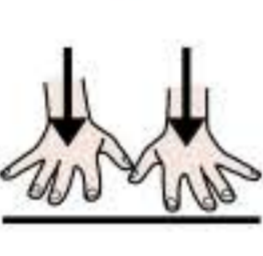
opera,



che



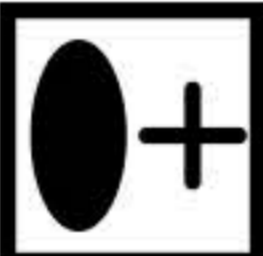
è



all'ingresso



delle



Industrie Fluviali



L'autore



ha



voluto



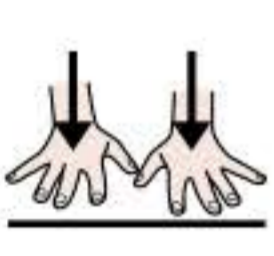
indicare



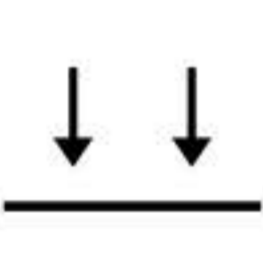
che



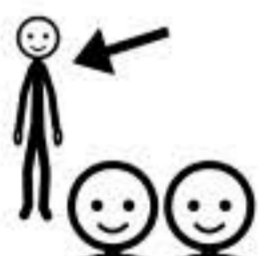
sono



state



le



figure



che



ha



realizzato



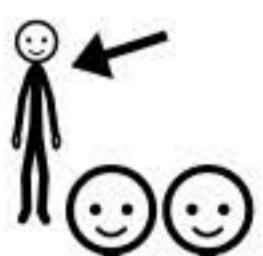
a far



nascere



le



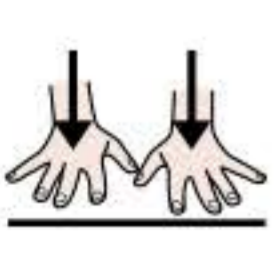
Industrie Fluviali.



L'autore



è



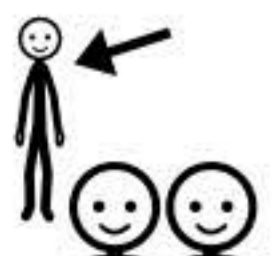
Andrea Casciu



e



le



sue



opere



raffigurano



spesso



immagini



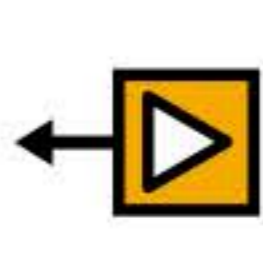
con



elementi



della



natura.

